

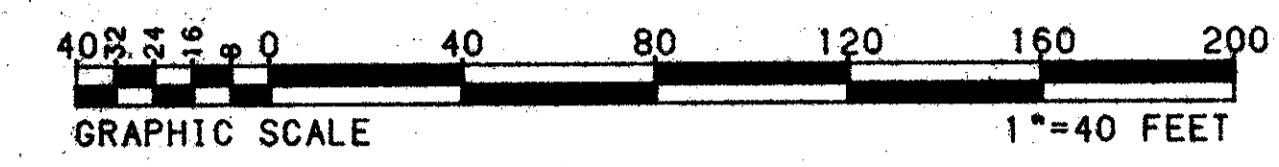
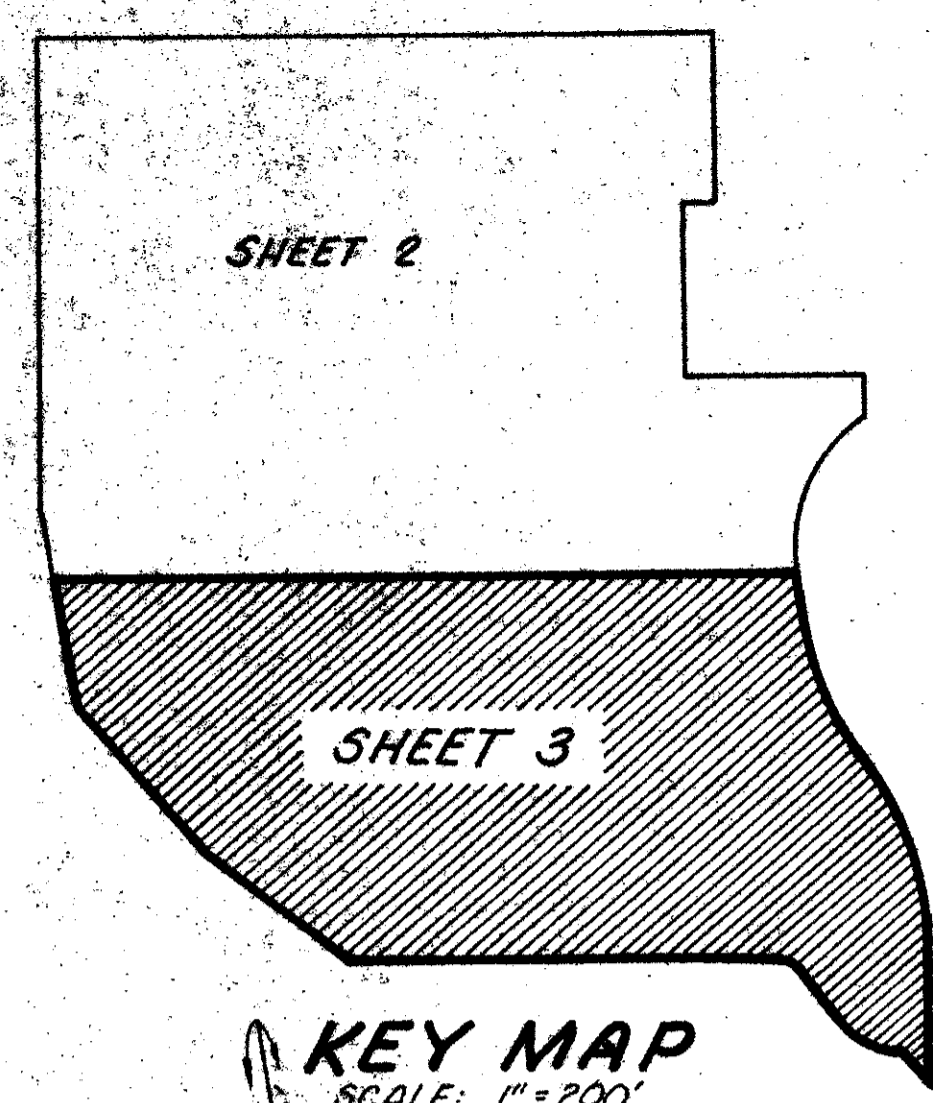
DRAWING NUMBER  
**49/1129**

# THE GARDENS OF WILLOW BEND

## PLAT NO. IX

49/ **129**

BEING THE NINTH PLAT OF MEED RACQUET CLUB P.U.D.  
SECTIONS 20 AND 21, TOWNSHIP 44 SOUTH, RANGE 42 EAST  
PALM BEACH COUNTY, FLORIDA  
BEING A REPLAT OF TRACT 79 AND PORTIONS OF TRACTS 78, 80, 81, 82 AND 83, BLOCK 23  
PALM BEACH FARMS COMPANY PLAT NO. 3 PLAT BOOK 2 PAGE 47  
MAY, 1984

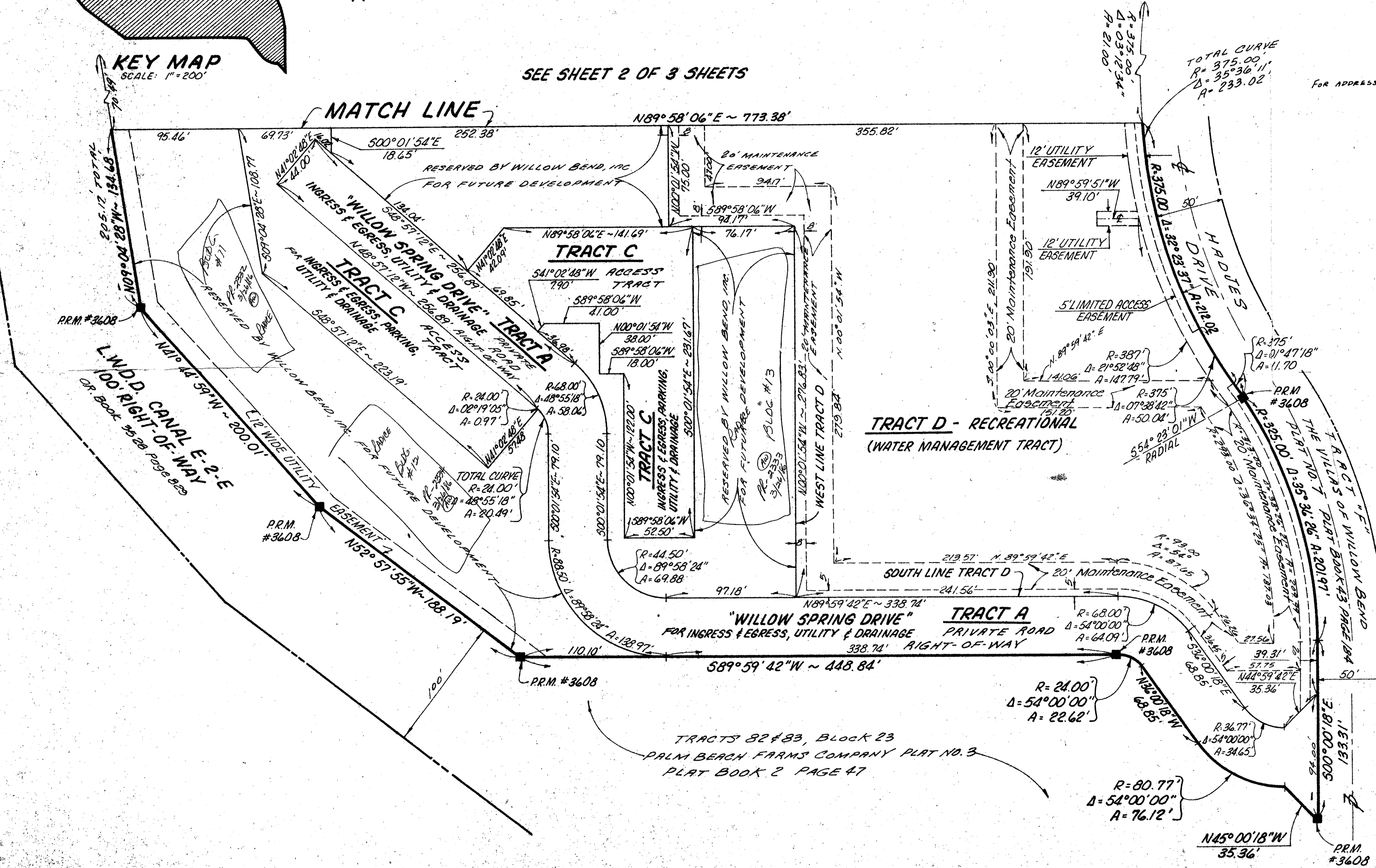


DRAWING NUMBER  
PLAN HOLD CORPORATION • IRVINE, CALIFORNIA  
REORDER BY NUMBER 072AR

DRAWING NUMBER  
PLAN HOLD CORPORATION • IRVINE, CALIFORNIA  
REORDER BY NUMBER 072AR

DRAWING NUMBER  
PLAN HOLD CORPORATION • IRVINE, CALIFORNIA  
REORDER BY NUMBER 072AR

SEE SHEET 2 OF 3 SHEETS



FOR ADDRESSES - SEE WILLOW BEND FILE

- SURVEY NOTES:**
- Bearings as shown hereon are in the Meridian of THE GARDENS OF WILLOW BEND PLAT NO. VIII as recorded in Plat Book 46 at Page 113 and 114 of the Public Records of Palm Beach County, Florida. (The Bearing of the Centerline of Meed Drive North is West.)
  - Indicates P.R.M. (Permanent Reference Monument)
  - Boundary Data Calculated from a Field Survey of the Subject Property.
  - D.E. Where shown indicates Drainage Easement.
  - U.E. Where shown indicates Utility Easement.
  - No Buildings or any kind of Construction shall be placed on Utility or Drainage Easements.
  - No Structures, Trees or Shrubs shall be placed on Drainage Easements.
  - Approval of Landscaping on Utility Easements other than water and Sewer shall be only with the approval of all Utilities occupying same.

THE VILLAGES OF WILLOW BEND  
PLAT NO. 7  
PLAT BOOK #3 PAGE 184

21/44/42

SUPERVISION #	J.H. Anderson
BOOK	49
PAGE	129
FLOOD ZONE	B
FLOOD MAP #	160
QUAD #	48
ZONING	
SE	ZIP CODE 33467
PUD NAME	

03910-303

49/1129

THIS INSTRUMENT WAS PREPARED BY:  
JOHN H. LITSEN P.L.S.  
CRAVEN THOMSON & ASSOCIATES, INC.  
5154 ORECHOBEE BOULEVARD  
WEST PALM BEACH, FLORIDA 33409

GARDENS OF WILLOW BEND